

Arlozorov St. 8, Tel Aviv-Yafa / Israel

Parking System with Pit



Construction year : **2020**

Employer : **Urban Parking**

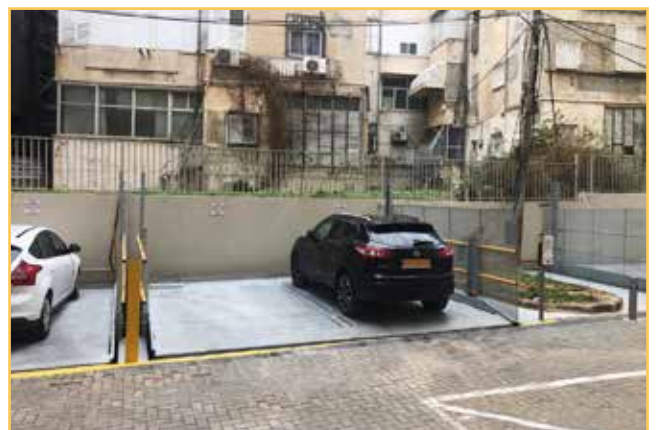
Supplier : **Parkolay**

Capacity : **12 Car Parking Spaces**

Model : **Parkist 11, Parkist 22**

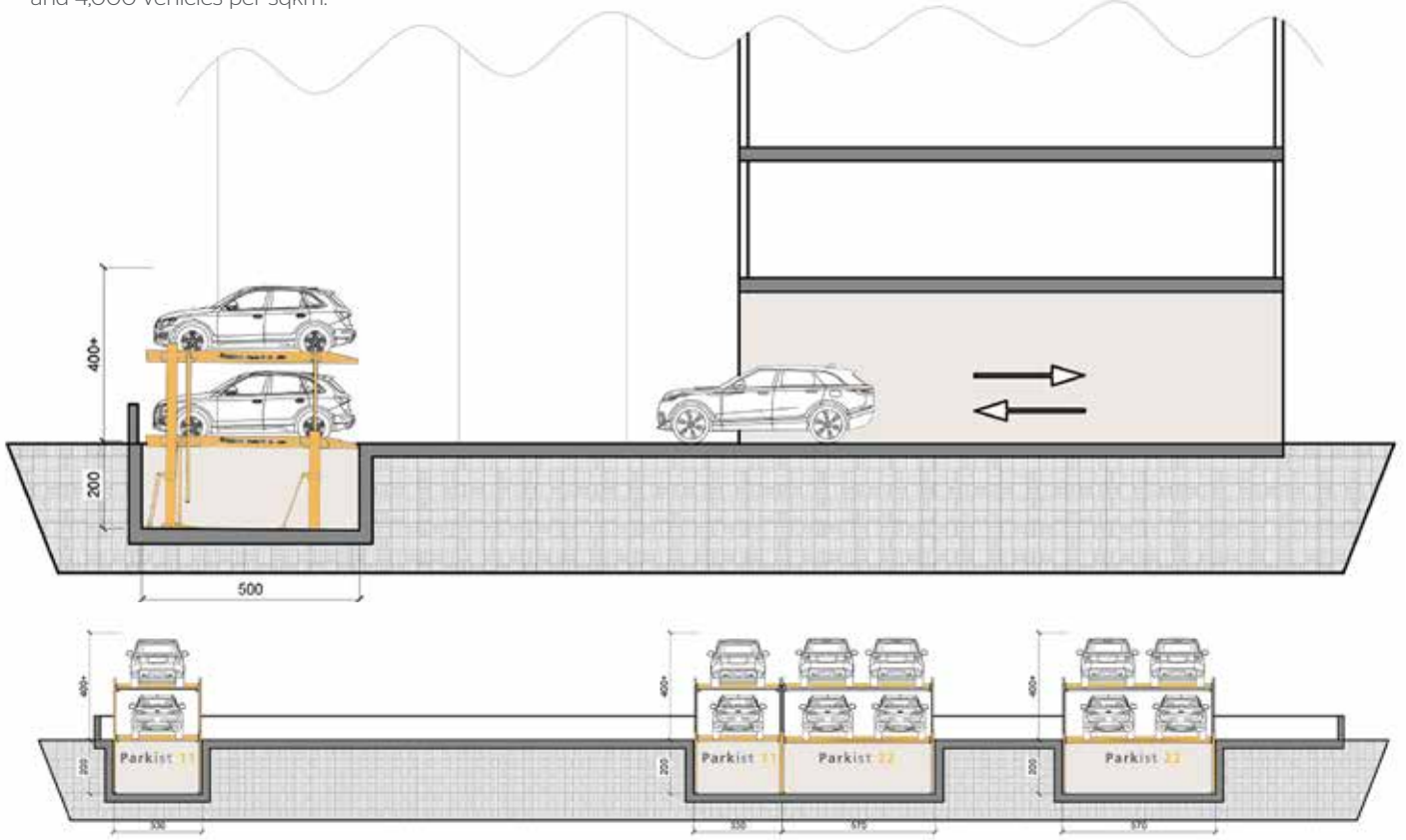
Application : **Residential - Permanent User**

At a distance of 240m from the Turkish Republic's Embassy in Tel Aviv, our **Parkist Series'** independent **Parkist 11, Parkist 22** systems had been installed in this renovated residential project, upon the regulations set by the related Municipality, to maximize the parking capacity in a modern and convenient manner. Our solution offers the highest comfort level with its 2,200 kg / vehicle load capacity, 180-200 cm vehicle height and special 170-300 cm platform width dimensions, while still meeting the requirements of the Project.



Parkist 11 and **Parkist 22** systems create an underground parking space, offering an independent parking solution that doubles your garage capacity. You can park your vehicle directly onto the platform at the entry level. When the system rises, it is parked on the lower platform that is able to reach the entry level. It is now possible to build a second parking level without resorting to the use of a ramp for access. The systems provide an independent parking experience in which vehicles don't obstruct each other.

Information: Tel Aviv-Jaffa is the most developed city in Israel. It is home to over 200,000 vehicles which are in use on an area of 52sqkm, and to a population of 450,000 people living within 200,000 households; numbers that can be set as a city of 8,600 people and 4,000 vehicles per sqkm.



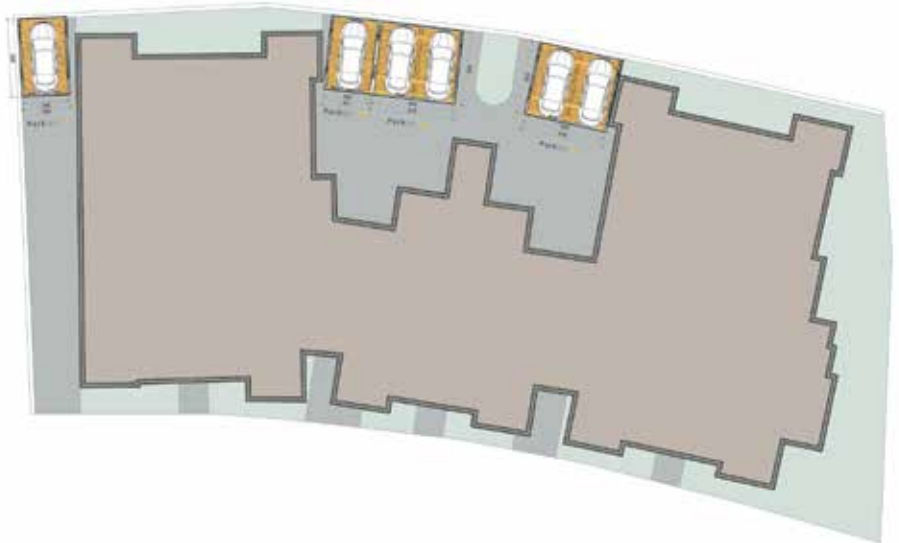
Arlozorov St. 8, Tel Aviv-Yafa / Israel

Technical Specifications

Type	: Mechanical Parking System with Pit
Year	: 2020
City	: Tel Aviv-Yafa
Employer	: Urban Parking
Model	: Parkist 11, Parkist 22
Capacity	: 12 Car Parking Spaces
	Independent Parking
Area	: 100 sqm

Car Dimensions

Vehicle Length	: 500 cm
Platform Width	: 300 cm / 540 cm
Headroom	: Outdoor Installation
Pit Depth	: 200 cm
	Upper Level: 200 cm Lower Level: 180 cm
Load Capacity	: 2200 kg
Wheel Capacity	: 550 kg
HPP	: 5,5 kW x 2 Units of Hydraulic Power Pack
Control System	: Hold-To-Run Key Switch



Standart: EN 14010: 2003 + A1: 2009

