

439 Bay St, Brighton, Melbourne, Australia
Semi Automatic Parking System with Pit



Construction year : **2018**

Employer : **Hamilton Parking Systems**

Supplier : **Parkolay**

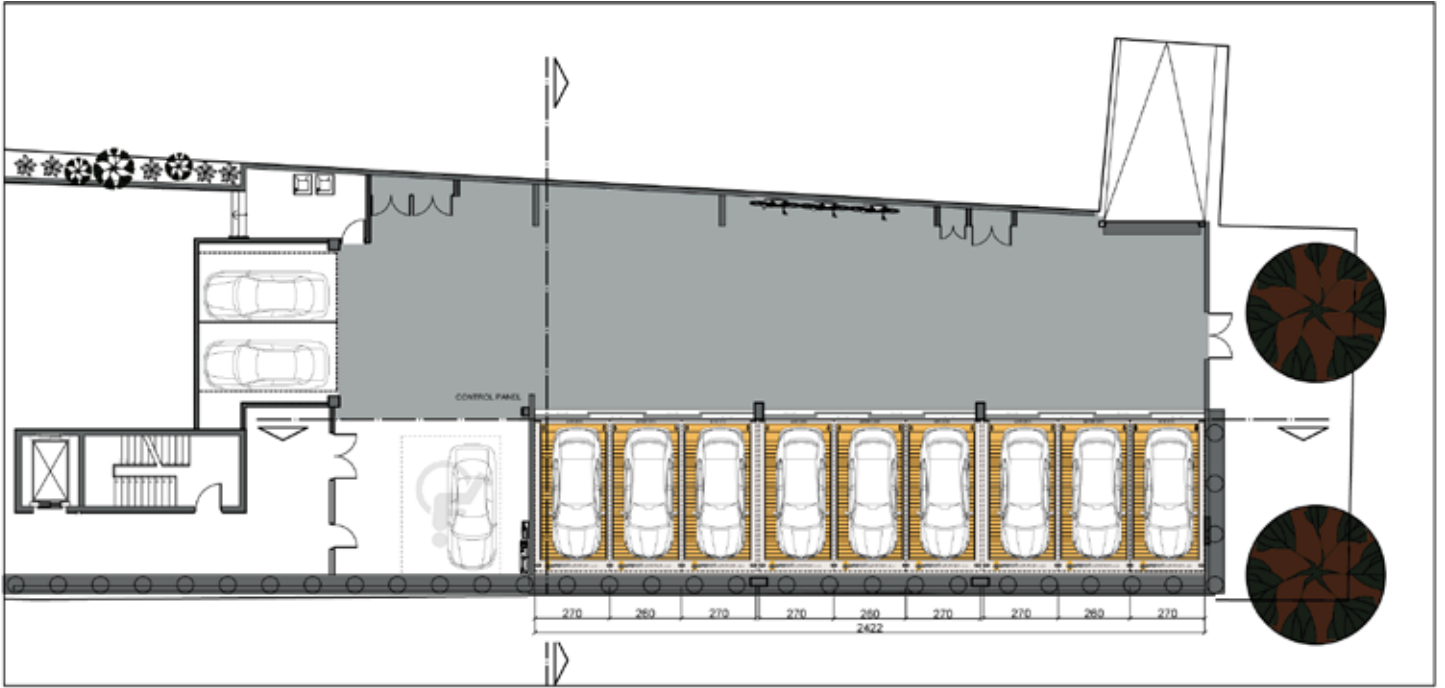
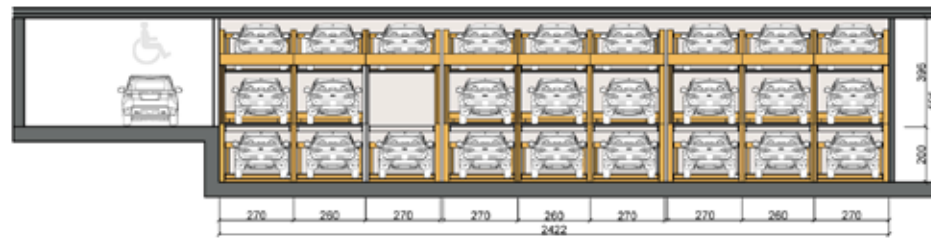
Capacity : **26 Car Parking Spaces**

Model : **Parkonfor 111**

Application : **Residential - Permanent User**

Parkonfor 111 system has been installed in this project and it allowed to triple the total area's parking capacity from 9 spaces to 26 parking spaces in an area of 330 sqm. Innovation: Users can park easily with passing through multipanel doors that prove wide width access through the remote controls.



**Parkonfor 111**

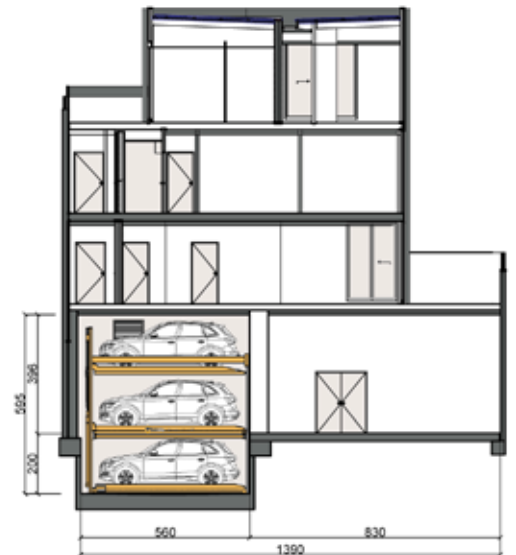
439 Bay St, Brighton, Melbourne, Australia

Technical Specifications

Type	: Semi-Automated Parking System with Pit
Year	: 2018
City	: Melbourne
Employer	: Hamilton Parking Systems
Model	: Parkonfor 111 x 1
Capacity	: 26 Car Parking Spaces
Area	: 300 sqm
HPP	: 4,0 kW x 1 Unit of Hydraulic Power Pack
Control System	: Touch-screen Control Panel
Option	: Remote Controls

Car Dimensions

Vehicle Length	: 500 cm
Platform Width	: 240 cm
Headroom	: 3800 cm
Pit Depth	: 200 cm
Vehicle Height	: 175 cm (9 Park Spaces)
	: 180 cm (17 Park Spaces)
Load Capacity	: 2.200 kg
Wheel Capacity	: 550 kg



Standart : TS EN 14010

