

Brunswick, Melbourne, Australia

Semi Automatic Parking System with Pit and Pass Thru



Construction year : **2018**

Employer : **Hamilton Parking Systems**

Supplier : **Parkolay**

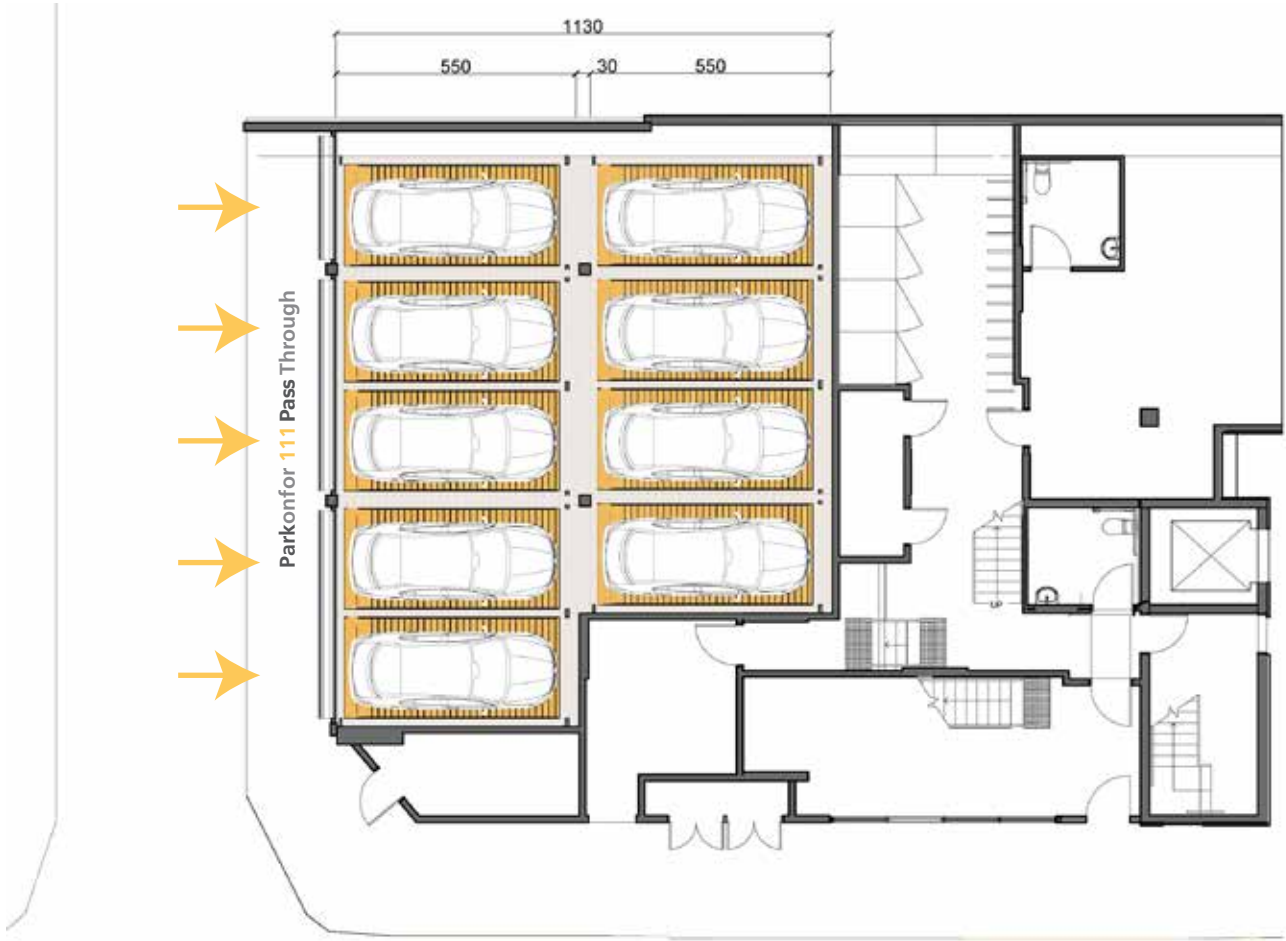
Capacity : **25 Car Parking Spaces**

Model : **Parkonfor 111 Pass Through**

Application : **Residential - Permanent User**

Our second pass-through system to be installed in Melbourne is in the basement of this residential site. In a total of 9 grids (front and rear sides), users are able to independently park up to 25 vehicles in a semi-automated manner, without the interference of any operator. The total project's area extends on 170 sqm.





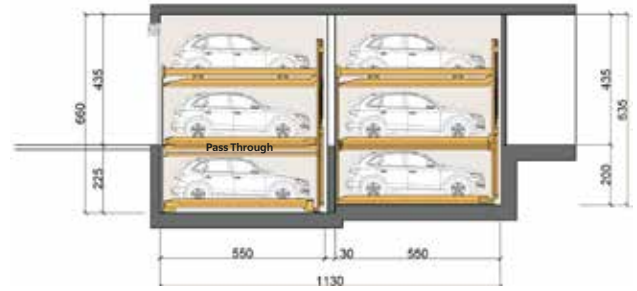
Brunswick, Melbourne, Australia

Technical Specifications

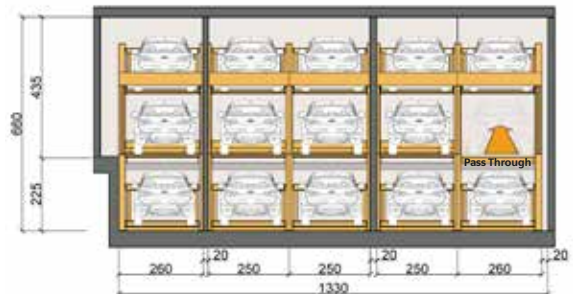
Type	: Semi Automatic Parking System With Pit and Pass Thru
Year	: 2018
City	: Melbourne
Employer	: Hamilton Parking Systems
Model	: Parkonfor 111 Pass Through X1
Capacity	: 25 Car Parking Spaces
Area	: 170 sqm

Car Dimensions

Vehicle Length	: 500 cm (14 Park Spaces)
	: 490 cm (11 Park Spaces)
Platform Width	: 230 cm (25 Park Spaces)
Headroom	: 435 cm
Pit Depth	: 213 cm (11 Park Spaces)
	: 238 cm (14 Park Spaces)
Vehicle Height	: 180 cm
Load Capacity	: 2.200 kg
Wheel Capacity	: 550 kg
HPP	: 4,0 kW x 1 Unit of Hydraulic Power Pack
Control System	: Touch-screen Control Panel
Option	: Insulation Pads



Parkonfor 111 Pass Through



Standart : TS EN 14010

