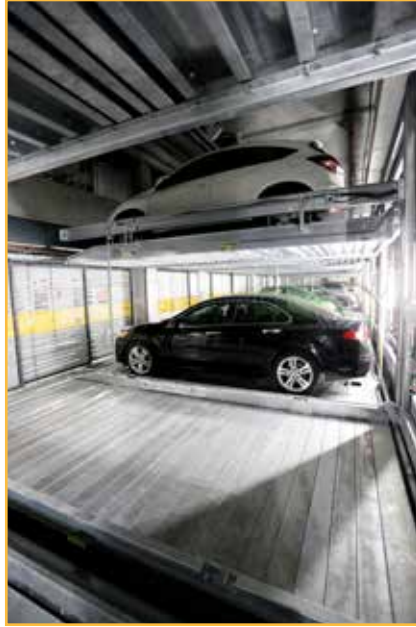


29-31 Queens Avenue, Hawthorn, Australia

Semi Automatic Parking System with Pit and Pass Thru



Construction year : **2018**

Employer : **Hamilton Parking Systems**

Main Contractor : **Parkolay**

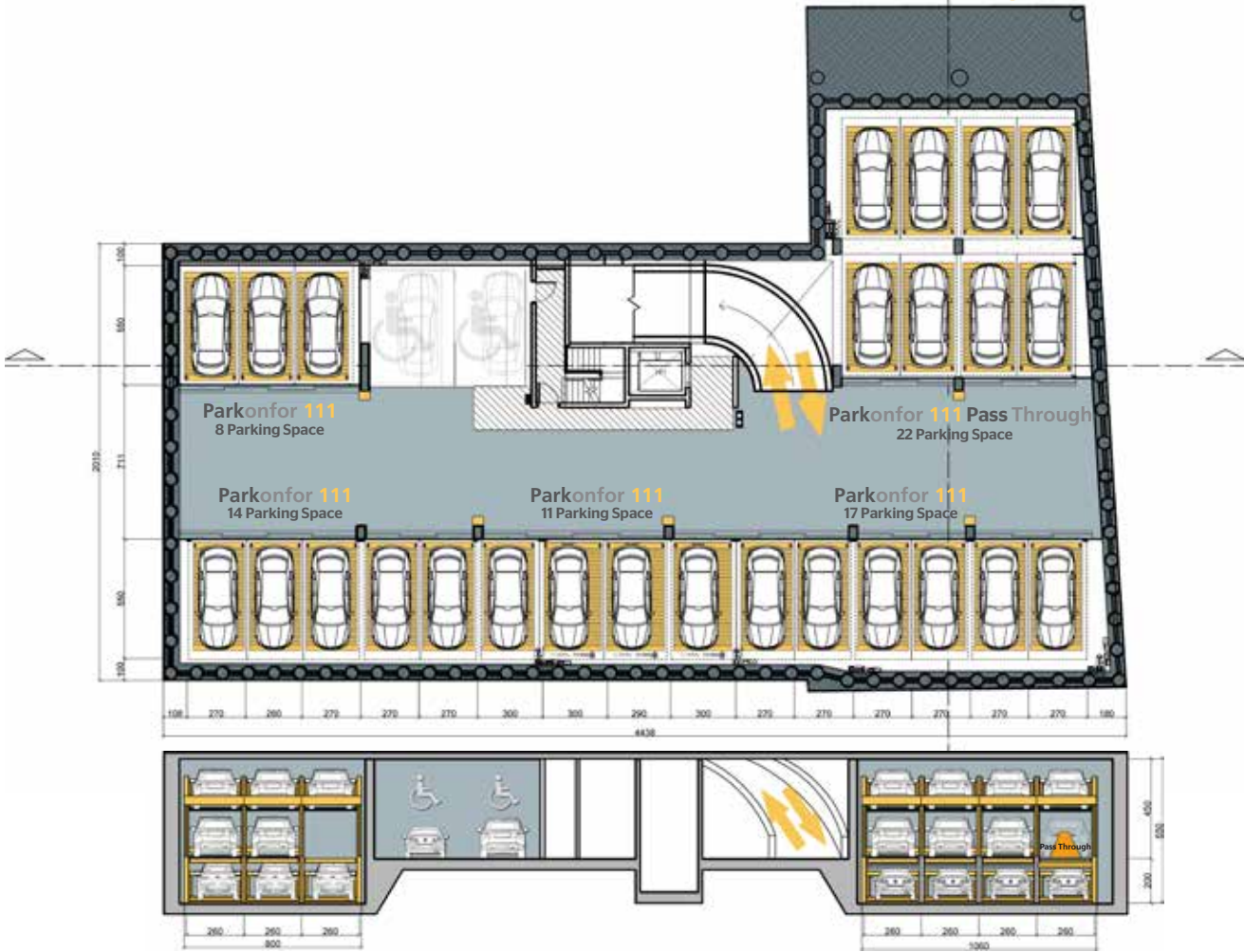
Capacity : **72 Car Parking Spaces**

Model : **Parkonfor 111, Parkonfor 111 Pass Through**

Application : **Residential - Permanent User**

Our first semi-automatic parking system in Australia was implemented in a total area of 800 square meters. It consists of 5 independent units of the pit-type semi-automated parking system **Parkonfor 111**, including **1 Pass Through** type of system. This solution tripled the capacity of the parking lot and provided a total of 72 parking spaces. This implemented pass-through system, being a first in Australia, includes a pass-through platform which slides to the sides in order to cover the gap at the entrance level, for the users to be able to access the rear row.





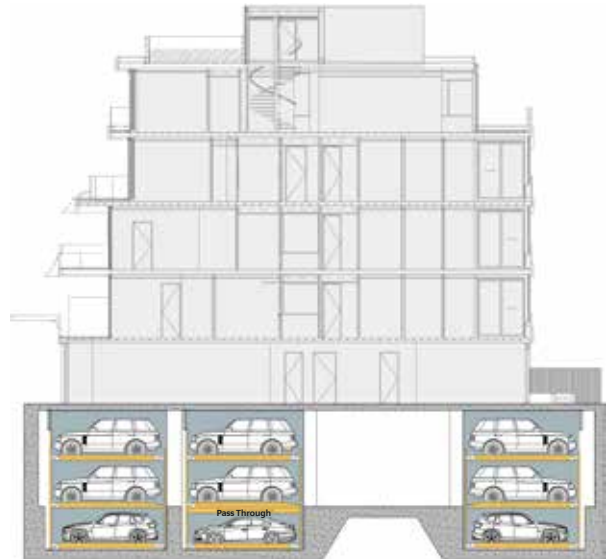
29-31 Queens Ave, Hawthorn, Australia

Technical Specifications

Type	: Semi-Automated Parking System with Pit
Year	: 2018
City	: Melbourne
Employer	: Hamilton Parking Systems
Model	: Parkonfor 111 x 4, Parkonfor 111 Pass Through x 1
Capacity	: 72 Car Parking Spaces
Area	: 800 sqm
HPP	: 4,0 kW x 5 Units of Hydraulic Power Pack
Control System	: Touch-screen Control Panel

Car Dimensions

Vehicle Length	: 500 cm
Platform Width	: 240 cm (64 Park Spaces)
	: 270 cm (8 Park Spaces)
Headroom	: 450 cm
Pit Depth	: 200 cm
Vehicle Height	: 200 cm (46 Park Spaces)
	: 180 cm (22 Park Spaces)
	: 150 cm (4 Park Spaces)
Load Capacity	: 2.200 kg
Wheel Capacity	: 550 kg



Standart : TS EN 14010

