

Bristol Hotel, Melbourne, Australia Mechanical Parking System with Pit



Construction year : **2017**

Employer : **Hamilton Parking Systems**

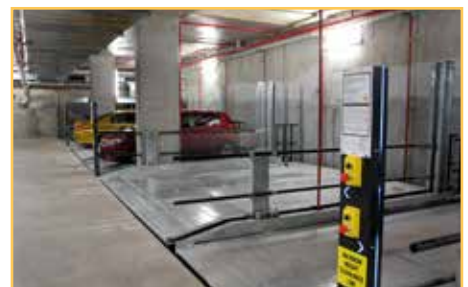
Supplier : **Parkolay**

Capacity : **30 Car Parking Spaces**

Model : **Parkist 11, Parkist 22**

Application : **Residential - Permanent User**

Installing mechanical parking solutions in Bristol Hotel Project allowed to double the parking capacity in the building basement. 30 vehicles are currently able to independently park in a total of 271sqm (5,30x 41m) area.





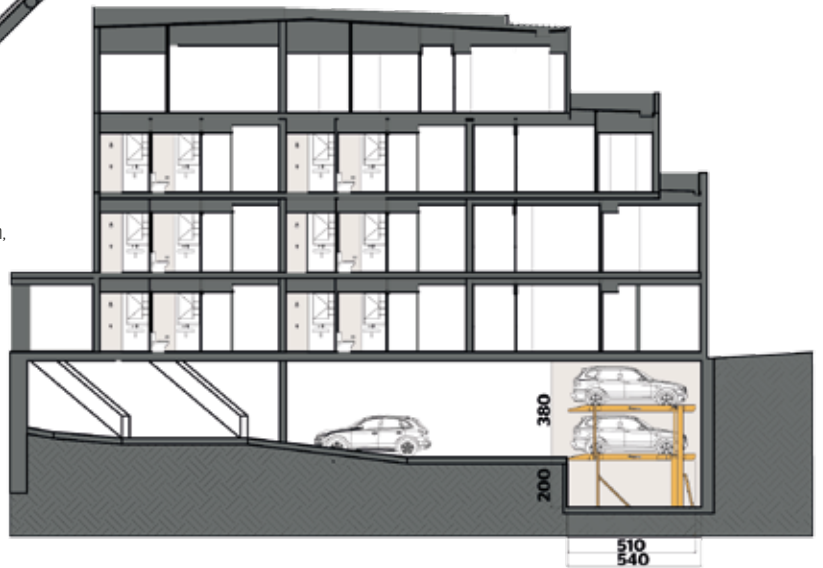
Australia, Melbourne, Bristol Hotel

Technical Specifications

Type	: Mechanical Parking System with Pit
Year	: 2017
City	: Melbourne
Employer	: Hamilton Parking Systems
Model	: Parkist 11 x 5, Parkist 22 x 5 Mechanical Parking System, Independent
Capacity	: 30 Car Parking Spaces
Area	: 271 sqm

Car Dimensions

Vehicle Length	: 500 cm
Platform Width	: 240 cm
Headroom	: 380 cm
Pit Depth	: 200 cm
Vehicle Height	: 180 cm
Load Capacity	: 2800 kg
Wheel Load	: 700 kg
HPP	: 5,5 kW x 2 Units of Hydraulic Power Pack
Control System	: Hold-To-Run Key Switch



Standart : TS EN 14010